

A detailed historical map of Audley Parish, showing various landmarks, roads, and geographical features. The map includes labels for 'Audley', 'The Quarry', 'Miles Green', 'Raven's Lane', and 'Bignall Hill'. It also shows numerous 'Old Coal Shafts' and 'Meth. Chap.' locations. The map is overlaid with a large, semi-transparent text box containing the title 'AUDLEY PARISH HERITAGE ASSETS'.

AUDLEY PARISH HERITAGE ASSETS

Acres 8313.306

AUDLEY PARISH HERITAGE ASSETS

Audley has a rich and diverse history - it has gone from being an important medieval fortified site to a major coal producing community and even features in the Domesday Book. Today, the influence of the agricultural and industrial activities of the past can still be seen around the parish – if you know where to look!

A comprehensive list of Heritage Assets, which are important features of the villages and range from farms and barns, medieval cart tracks and agricultural workings to street signs, an air raid siren, utilities buildings, caves, and mine and railway artefacts, is being put forward for evaluation to become locally listed and once this has been achieved some will achieve full listing.

Our parish consists of the following villages:

Audley, Bignall End, Miles Green, Wood Lane, Halmer End, Alsagers Bank and Scot Hay

Each village has it's own unique character, building style and heritage. There are common themes that unify these villages e.g. terraced houses, stone walls, chapels and many more, and our aim – with your help is to protect the things within the villages and parish that make them the areas that we know and love. Once these items are gone, they will be lost forever and we want to preserve the aesthetic of the area too so that architectural details and interesting features are not lost.

We have identified a number of these assets which are not currently listed (e.g. Grade I/ II) – and therefore potentially at risk. Buildings and features that are on the listing register have not been included e.g. the fingerpost signpost at Great Oak, the mile marker on Ravens Lane, Miles Green Farm (with the thatched roof), St James' Church, the Arch buildings in Audley (William White Buildings) as these already have a protected status.

Please have a look at the Heritage Assets and use these as a guide when completing your questionnaire.

NOTE: These are not exhaustive but a way for you to see just how many different things make up our parish. You can use any of the assets suggested here or, if there is something else that you think is noteworthy – no matter how weird, wonderful, big or small, please write it down so that we can add it to our list.

Thank you!

AUDLEY PARISH HERITAGE ASSETS – LOCAL CURIOSITIES

The following Heritage Assets are 'local curiosities'. These are some of the features of the villages that we pass through on a daily basis and have become so accustomed to them being there that we barely give them a second glance.

There are some weird, wonderful and unique treasures in our parish that deserve to be recognised. These may be remnants from a bygone era, something that adds a bit of character to the village, is a particular identifying feature or is something that is just lovely and special to have.

How many of you have driven past 'Narra Nick' when going over Boon Hill and not known the pathway had a nickname, or have passed the old Council Offices (now Peak Pursuits) and not seen one of the few remaining air raid sirens in the area, or travelled down New Road and passed the benchmark on the wall?

By recording and protecting these curious features, we are preserving the things that add to the fabric of our parish.



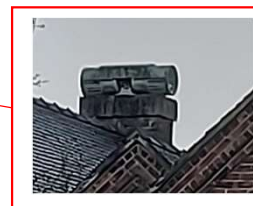
- 'NARRA NICK'
- LOCATED ON BOON HILL ROAD
- CROSS THE ROAD AND YOU CONTINUE DOWN TO THE LINES



- PEAK PURSUITS HQ
- CASTLE HILL
- FRONT VIEW FROM MAIN ROAD



- PEAK PURSUITS HQ
- VIEW OF REAR OF BUILDING AND THE AIR RAID SIREN IS VISIBLE



- BENCHMARK
- NEW ROAD
- LOCATED ON MAIN ROAD FROM BIGNALL END TO AUDLEY

AUDLEY PARISH HERITAGE ASSETS – LOCAL CURIOSITIES



- 'NARRA NICK'
- LOCATED ON BOON HILL ROAD
- CROSS THE ROAD AND YOU CONTINUE DOWN TO MARION PLATT WAY (THE LINES) AND OCCUPATION BRIDGE



- BRICK BUS SHELTER
- BUTTERS GREEN, BIGNALL HILL



- WOODEN PLANK BRIDGE OVER BRIERLY BROOK
- NEAR EDWARD STREET PLAYGROUND, BIGNALL END



- WOODEN PLANK BRIDGE OVER BRIERLY BROOK
- NEAR ALSAGER ROAD (AT THE BOTTOM OF TOWNFIELDS)



- 'WHITE RAILS' TRIANGLE
- MEGACRE, BIGNALL END

AUDLEY PARISH HERITAGE ASSETS – LOCAL CURIOSITIES



- BASE OF GAS LIGHT
- HOLDING CRESCENT, HALMER END



- DECORATED BUS SHELTER
- LEYCETT ROAD, SCOT HAY



- KENT HILL CAVES
- NANTWICH ROAD, AUDLEY
- FORMER GRAVEL QUARRY



- HORSE CHESTNUT AVENUE
- BIGNALL END ROAD, BIGNALL END



- OLD PEAR TREE
- NEW ROAD, BIGNALL END
- THE SECOND IMAGE ALSO SHOWS THE LISTED MILE MARKER

AUDLEY PARISH HERITAGE ASSETS – LOCAL CURIOSITIES



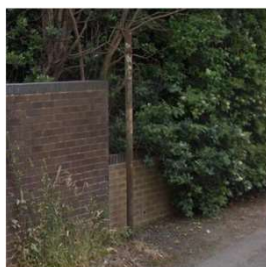
- AUDLEY PARISH BOUNDARY STONE
- THERE ARE 2 BOUNDARY STONES IN APEDALE
- THESE FEATURE AN 'A' DENOTING 'AUDLEY'



- MEDIEVAL CART TRACKS
- TWO GREEN LANES GOING WESTWARD FROM BROOK FARM (PARK LANE) TO DOMVILLES AND J16 OF M6



- MILK CHURN STAND
- HOME FARM, BIGNALL END ROAD



- OLD ROAD SIGN POLE
- HEATHCOTE ROAD, MILES GREEN
- (THE WALL BELONGS TO THE FLATS IN VICTORIA PLACE)



- AIR RAID SIREN
- ON THE ROOF OF PEAK PURSUITS (FORMER COUNCIL OFFICES) CASTLE HILL
- THERE ARE VERY FEW OF THESE LEFT IN STAFFORDSHIRE



← APEDALE HALL



- 'UNWINS LANE'
- THE OLD COACH ROAD FROM MILES GREEN ROAD TO APEDALE HALL
- THIS ROAD WAS USED BECAUSE THE GRADIENT OF ALSAGERS BANK WAS MUCH TOO STEEP FOR THE HORSES PULLING THE COACHES.
- THIS ROUTE HAS A MORE GRADUAL INCLINE TOWARDS THE ESTATE.
- THE TRACK IS STILL THERE TODAY, ALTHOUGH THE HALL IS NOT.
- IT ALSO PROVIDED ACCESS TO THE MANY FOOTRAILS LOCATED ALONG ITS LENGTH

AUDLEY PARISH HERITAGE ASSETS – LOCAL CURIOSITIES

• POST MOUNTED POST BOXES



- OUTSIDE RILEY'S
- HIGH STREET, HALMER END



- WERETON ROAD, AUDLEY



- VICTORIA PLACE, MILES GREEN



- NANTWICH ROAD, AUDLEY

• WALL MOUNTED POST BOXES



- ALBERT STREET, BIGNALL END



- LEYCETT ROAD, SCOT HAY



- HEATHCOTE ROAD, MILES GREEN

• PILLAR POST BOXES



- OPPOSITE GRESLEY ARMS
- HIGH STREET, ALSAGERS BANK



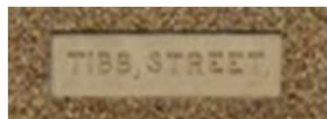
- OUTSIDE LONDIS
- RAVENS LANE, BIGNALL END

AUDLEY PARISH HERITAGE ASSETS – LOCAL CURIOSITIES

- METAL PLATE STREET NAME SIGNS



- STONE ENGRAVED STREET NAME SIGNS, BIGNALL END



- STONE WALLS ARE A COMMON FEATURE THROUGHOUT THE PARISH



- TWO TYPES OF STONE WALL AT THE JUNCTION WITH ALSAGER ROAD AND NANTWICH ROAD



AUDLEY PARISH HERITAGE ASSETS – BUILDING TYPES AND STYLES

The following Heritage Assets are examples of locally important buildings and styles. Audley village has some fine architectural examples as you travel along Church Street from the former Market Hall (now Audley Climbing Centre), the arched William White Buildings, St James' Church, The Butchers Arms to the white stone clad retail parade.

Hall Street has some interesting terraced buildings which feature a two tone brick composition and the Art Deco façade of the Theatre. On the corner is a building which was once Thomas Warham's photographic studio and is still used for this purpose today.

Around the parish there are numerous terraced streets which would have housed the many families who worked in the coalmines of the area. There are many 'villas' which often feature Minton Tiles and beautiful stone window detailing.

It is possible to see how the parish has grown over the years as the architecture reflects the building style of the eras. The post-war development of the Audley housing estate are built to the local authority blueprint, Nantwich Road has typical semi-detached styles from the 1940's/50's, the Ravenspark estate in Bignall End has a typical 1970's style and houses on Heathcote Road in Halmer End are of the 1990's style.

AUDLEY ESTATE



NANTWICH ROAD, AUDLEY



RAVENSPARK ESTATE



HEATHCOTE ROAD, HALMER END



Also important in the parish are the buildings associated with agriculture – from the imposing Domvilles Farm, to the model farm on Nantwich Road (Wall Farm), the historic Hullocks Pool Farm and the mills at Mill End, Mill Dale and Boughey Mill (Nantwich Road).

AUDLEY PARISH HERITAGE ASSETS – BUILDING TYPES AND STYLES

- RAVENS LANE, BIGNALL END



- ALSAGER ROAD, AUDLEY



- HALL STREET, AUDLEY



- TERRACED HOUSES FROM AROUND THE PARISH
- DIFFERENT ARCHITECTURAL STYLES WHICH GIVE CHARACTER TO THESE BUILDINGS

- MELLARD STREET, AUDLEY



- NEW ROAD, BIGNALL END



- HIGH STREET, HALMER END



- WILBRAHAM'S WALK, AUDLEY



- LEYCETT ROAD, SCOT HAY



AUDLEY PARISH HERITAGE ASSETS – BUILDING TYPES AND STYLES

- HIGH STREET, HALMER END



- NARROW HOUSES FROM AROUND THE PARISH
- THESE QUIRKY BUILDINGS ARE VERY UNUSUAL AND LOOK LIKE THEY ARE MISSING ANOTHER HALF!
- THEY ARE DECEPTIVELY SPACIOUS AND THE ACCOMMODATION TENDS TO STRETCH BEHIND THE HOUSE RATHER THAN TO THE SIDE.

- HIGH STREET, ALSAGERS BANK



- RAVENS LANE, BIGNALL END



- OLD ROAD, BIGNALL END



AUDLEY PARISH HERITAGE ASSETS – BUILDING TYPES AND STYLES

- HIGHFIELDS
- CHURCH STREET, AUDLEY
- GEORGIAN SYMMETRICAL STYLE AND PROPORTIONS



- PEAK PURSUITS, CASTLE HILL
- ORNATE, MULLIONED WINDOWS
- UNUSUAL CENTRAL CROSS WITH DATE ABOVE



- HALL/ CHURCH STREET, AUDLEY
- TREE LINED SECTION OF THE STREET
- THIS WAS THOMAS WARHAM'S PHOTOGRAPHY STUDIO ON THE CORNER



- THE DRIVE, ALSAGERS BANK
- FORMER SCHOOL HOUSE AND PART OF THE APEDALE ESTATE
- BROW DETAILING ABOVE WINDOWS



- AUDLEY THEATRE, HALL STREET
- ART DECO FACADE



- NANTWICH ROAD, AUDLEY
- GRAND, ELEVATED RESIDENCE WITH LATTICE WINDOW DETAIL



- THE DRIVE, ALSAGERS BANK
- APEDALE HALL ESTATE BUILDING



- THE DRIVE, ALSAGERS BANK
- THE LODGE
- APEDALE HALL ESTATE BUILDING



AUDLEY PARISH HERITAGE ASSETS – BUILDING TYPES AND STYLES



- WOODLANDS HALL
- FORMERLY BIGNALL END HALL
- BIGNALL END ROAD, BIGNALL END
- BUILT AS BIGNALL END HOUSE IN THE 1770'S, IT BECAME KNOWN AS BIGNALL END HALL AND LATTERLY WOODLANDS HALL.
- THE HOME OF JOHN WEDGWOOD (MONUMENT), NICHOLAS PRICE WOOD AND REGINALD WOOD (REGGY'S).



- HIGH STREET, HALMER END
- WALL PLAQUE SAYS 'PERSEVERANDO PLACE'
- ARCHWAY TO ALLOW HORSE AND CART ACCESS
- TO THE REAR OF THE CREAM COLOURED HOUSE IS A FORMER BAKERY
- BAKERY BUILDINGS ARE LARGELY DERELICT



- WATER PUMPING STATION SERVICING THE RESERVOIR OFF NANTWICH ROAD
- BUILDINGS ARE NEXT TO KENT HILL FARM, NANTWICH ROAD
- 1940'S STYLE BUILDING



- THE BLACK AND WHITE HOUSE
- BARTHOMLEY ROAD, AUDLEY
- ART & CRAFTS STYLE
- BROW DETAILING ABOVE WINDOWS AND ORNAMENTAL 'SPIRES' ON THE ROOF PITCHES



- 'PONDEROSA', HEATHCOTE ROAD, MILES GREEN
- HAS AN UNCONVERTED & ORIGINAL BARN ATTACHED TO THE MAIN DWELLING

AUDLEY PARISH HERITAGE ASSETS – BUILDING TYPES AND STYLES

- WALL FARM & BARN
- NANTWICH ROAD, AUDLEY
- BUILT AS A 'MODEL FARM'



- CHURCH FARM BARN
- HIGH STREET, ALSAGERS BANK



- GREAT OAK FARM & BARN
- GREAT OAK ROAD, BIGNALL END
- OLDER BARN ENSHROUDED BY BRICK BARN (LONGER BARN BELOW)



- EARDLEY END FARM & BARN
- ALSAGER ROAD, AUDLEY



- TOWNHOUSE FARM & BARN
- ALSAGER ROAD, AUDLEY
- SITE OF A MEDIEVAL HOUSE AND REBUILT IN 18TH CENTURY



AUDLEY PARISH HERITAGE ASSETS – MINING & INDUSTRY

This section of the Heritage Assets shows that whilst the mines are now gone, they are not forgotten and that the local people still feel the loss of miners and the mines, meaning that there is a strong feeling in the Parish that the areas that these mines occupied should be treated with sensitivity and respect, given that so many miners perished here. Although there are no longer any collieries in the Parish, their existence means a lot to the residents of the area. There were 2 disasters which claimed the lives of hundreds of local men and boys and many descendants still reside in the Parish.

The Diglake Disaster in 1895 claimed the lives of 78 men and boys. Due to the massive inrush of water many bodies were never recovered and still remain in place to this day. Two attempts to opencast mine at Great Oak were thwarted by residents due to the Diglake Disaster as the exact location of the tragic miners' bodies is unknown. The Minnie Pit, which was located in Halmer End exploded in 1918 and claimed the lives of 156 men and boys.

Mining has long played a huge part in the Parish and there have been many footrails, smaller mines and large scale operations in the area. The last mine to close in the Parish was the opencast site at Bateswood in Halmer End which is now a nature reserve.

The railway lines and tramways connected the Parish mines, not only to each other, but also to the larger rail network and transported the valuable coal around the city and beyond.

Apedale played a significant part in the mining heritage of the Parish with several tramways connecting Burley Pit, footrails and the Apedale Ironworks. The formation of the Apedale Coal, Coke & Iron Co was the principal income for the landowners, the Heathcote family who resided at Apedale Hall.

Whilst most traces of the mines themselves are long gone, there are still bits to found around the Parish. The landscape is the biggest indicator and gives clues about the location of mines: the hill where Wedgwood's Monument is, the hillside at Peggys Bank and the Rec at Bignall End all point to the mining activities.

Whilst mining was the principal industry in the Parish, there have been several brickworks and tileries around the area as well.

AUDLEY PARISH HERITAGE ASSETS – MINING & INDUSTRY

- AUDLEY ROAD, BIGNALL END



- AUDLEY/ DIGLAKE COLLIERY SHOWN IN BLACK & WHITE IMAGE
- HOUSES NUMBERED CORRELATE TO THE HOUSES AS THEY STAND NOW
- 3 – THE WALL HAS NOT CHANGED AT ALL OTHER THAN HAVING HEDGE ABOVE IT
- 4 - DIGLAKE HOUSE.
- 5 - THIS HOUSE STILL HAS REMNANTS OF OLD COLLIERY BUILDINGS
- THE OLD MAP SHOWS THE CONCENTRATED AREA OF THE COLLIERIES HERE
- THESE COMBINE DIGLAKE, AUDLEY AND BIGNALL HILL COLLIERIES AND THE ASSOCIATED NETWORK OF RAIL AND TRAMWAYS TO TRANSPORT THE COAL



AUDLEY PARISH HERITAGE ASSETS – MINING & INDUSTRY

- DIGLAKE DISASTER MEMORIALS
- BIGNALL END



- MINNIE PIT DISASTER MEMORIALS
- HALMER END

